



AR-7025Um

ADSL USB Modem

Quick Installation Guide

December 2006



Copyright© by Edimax Technology Co, LTD. all rights reserved. No part of this publication may be reproduced, transmitted, transcribed, stored in a retrieval system, or translated into any language or computer language, in any form or by any means, electronic, mechanical, magnetic, optical, chemical, manual or otherwise, without the prior written permission of this company.

This company makes no representations or warranties, either expressed or implied, with respect to the contents hereof and specifically disclaims any warranties, merchantability or fitness for any particular purpose. Any software described in this manual is sold or licensed "as is". Should the programs prove defective following their purchase, the buyer (and not this company, its distributor, or its dealer) assumes the entire cost of all necessary servicing, repair, and any incidental or consequential damages resulting from any defect in the software. Further, this company reserves the right to revise this publication and to make changes from time to time in the contents hereof without obligation to notify any person of such revision or changes.

The product you have purchased and the setup screen may appear slightly different from those shown in this QIG. For more detailed information about this product, please refer to the User's Manual on the CD-ROM. The software and specifications subject to change without notice. Please visit our web site www.edimax.com for the update. All right reserved including all brand and product names mentioned in this manual are trademarks and/or registered trademarks of their respective holders.

Linux Open Source Code

Certain Edimax products include software code developed by third parties, including software code subject to the GNU General Public License ("GPL") or GNU Lesser General Public License ("LGPL"). Please see the [GNU](http://www.gnu.org) (www.gnu.org) and [LPGL](http://www.gnu.org) (www.gnu.org) Web sites to view the terms of each license.

The GPL Code and LGPL Code used in Edimax products are distributed without any warranty and are subject to the copyrights of their authors. For details, see the GPL Code and LGPL Code licenses. You can download the firmware-files at <http://www.edimax.com> under "Download" page.

- ※ The product you have purchased and the setup screen may appear slightly different from those shown in this QIG. For more detailed information about this product, please refer to the User's Manual on the CD-ROM.
- ※ Software and specifications subject to change without notice. Please visit our web site for the update.
- ※ All rights reserved. Trademarks or registered trademarks are the property of their respective

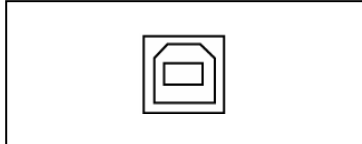
1. Hardware Indicators

1.1 LED Descriptions

- When modem is establishing the connection, the LED will be blinking.
- When modem is connected, the LED will be on steadily.

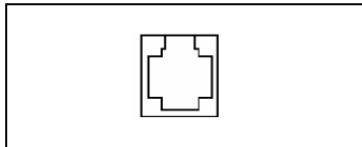
1.2 Front Panel

Connect this connector with Type-B end of USB cable.



1.3 Rear Panel

Connect this connector with RJ-11 cable.



2. Package Contains

Open the shipping carton and carefully remove all items. In addition to this quick installation guide, ascertain that you have:

- ADSL Modem
- RJ-11 Cable
- USB Cable
- Software driver CD

3. Hardware Installation

- 1) Connect the provided RJ-11 cable into **LINE** port on the rear panel of the modem and insert the other end to splitter or wall phone jack.
- 2) Connect the provided USB cable into **USB** port on the front panel of the modem and insert the other end to PC or Notebook.

4. Driver Installation

4.1 Before You Start

The following information may be required for software installation. Contact your DSL service provider before proceeding with software installation.

- IP Address Settings – the software installation process allows the server to dynamically assign IP Address settings. If your application requires static setting of specific address information you will need to know:

IP Address

Subnet Mask (for Bridged Ethernet applications only)

Default Gateway (for Bridged Ethernet applications only)

- Name Server Information – the software installation process allows the server to dynamically assign Name Server Address settings. If your application requires static setting of specific address information you will need to know:

Primary DNS Address

Secondary DNS Address

Primary WINS Address

Secondary WINS Address

- Type of Driver to be installed – WAN and LAN software drivers are supported.

Note: Required if not using default value

- ATM Virtual Path ID (VPI)

Note: Required if not using default value

- ATM Virtual Circuit ID (VCI)

Note: Required if not using default value

- Encapsulation type

Note: Required if not using default value

- Modulation type

Note: Required if not using default value

- User Name (for PPP applications only)

- Password (for PPP applications only)

4.2 Installing USB ADSL Modem

Step 1: When system detect new hardware, the Microsoft Windows “**Found New Hardware Wizard**” will be displayed, click “**Cancel**”.



Step 2: Insert “ADSL MODEM Driver CD”, the front page of Easy Setup window will be appeared,



Install Driver: Click here to install USB ADSL modem driver.


User Manual “Conexant AccessRunner USB ADSL”: Click here to read user’s manual.

Acrobat: Click here to install Acrobat Reader 6.0.

Panda: Click here to start Anti Virus program.

Step 3: Click “Install Driver”, and then select the country you are at,



PS. If your country is not on the list, please click “” to next page. Select “**Other**”, and then go to **Step 10** to set your modem.



Step 4: After country selecting, the window below will appear. Select the appropriate ISP, and then click “▶▶” to next page.



Step 5: Enter your account “User Name, Password and Password Confirm” then click “▶▶” to next page,



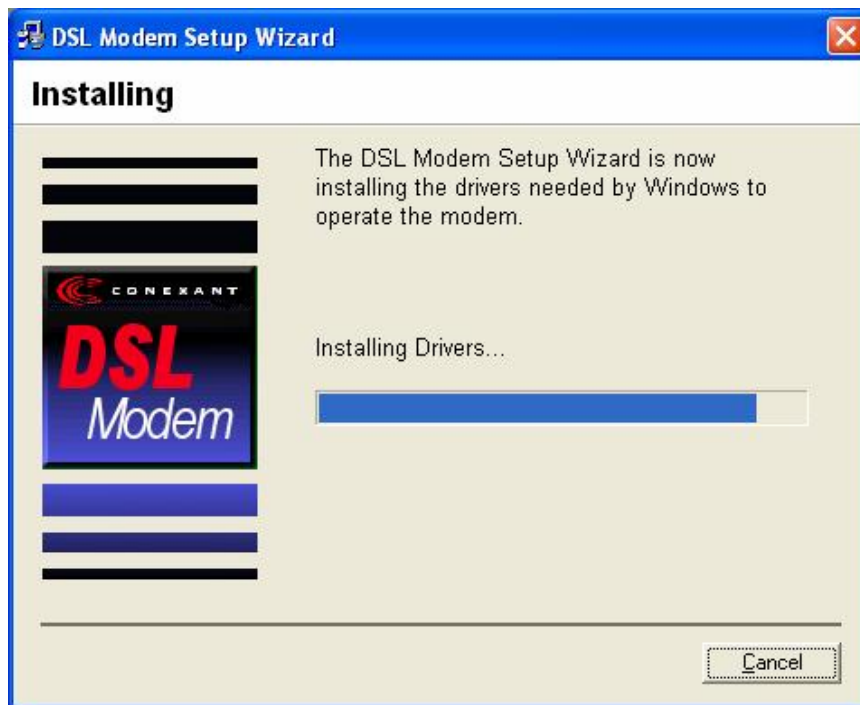
Step 6: Confirm modem settings and click “▶▶” to next page,



Step 7: Software kit searches available USB modem,



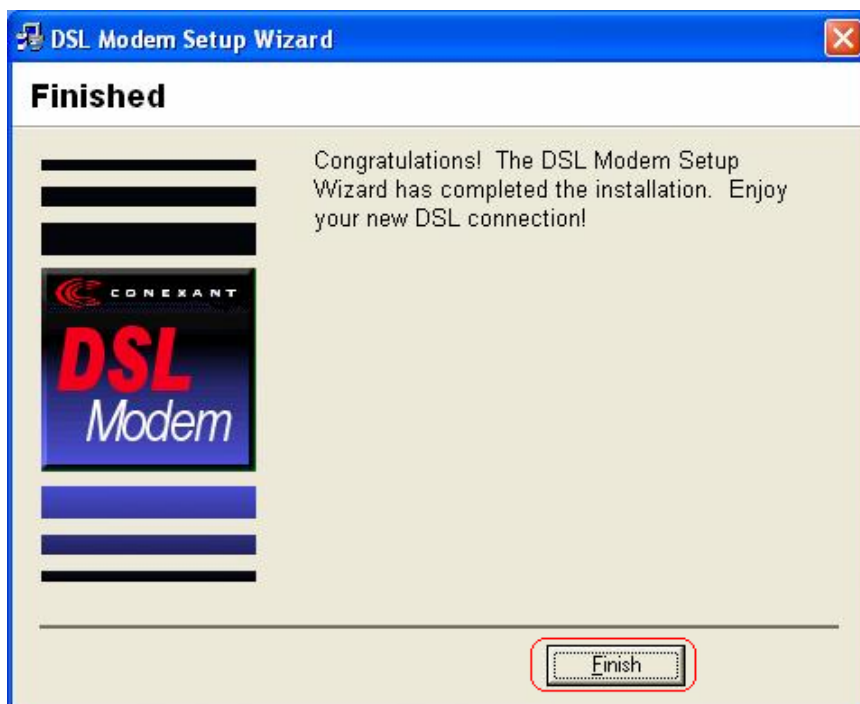
Step 8: The **Installing** window will be displayed indicating that the drivers are being installed.



Step 9: The system must be rebooted to have the new settings take effect.

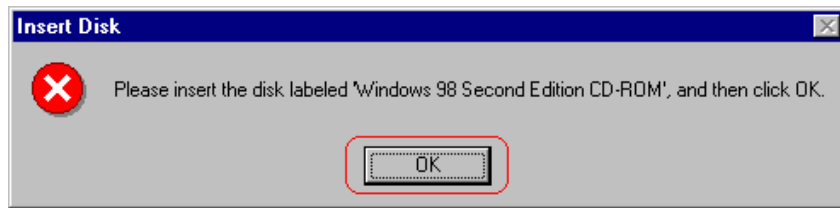
[For Windows XP, 2000, and ME]

In **Windows XP, 2000, and ME** Operating System, the Easy Setup program will automatically reboot your computer. Once the PC has rebooted, Installation of the USB Modem is completed. The **Finished** window will be displayed indicating the installation has been completed. Click "**Finish**".

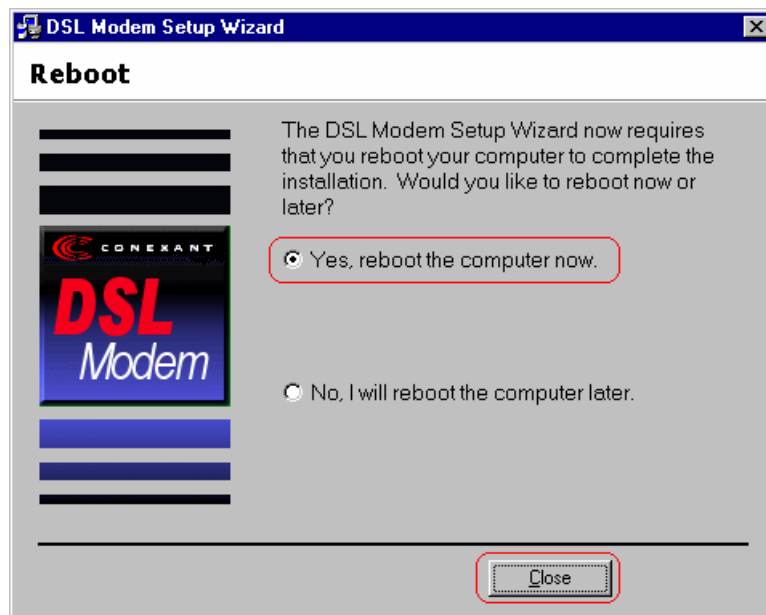


[For Windows 98SE]

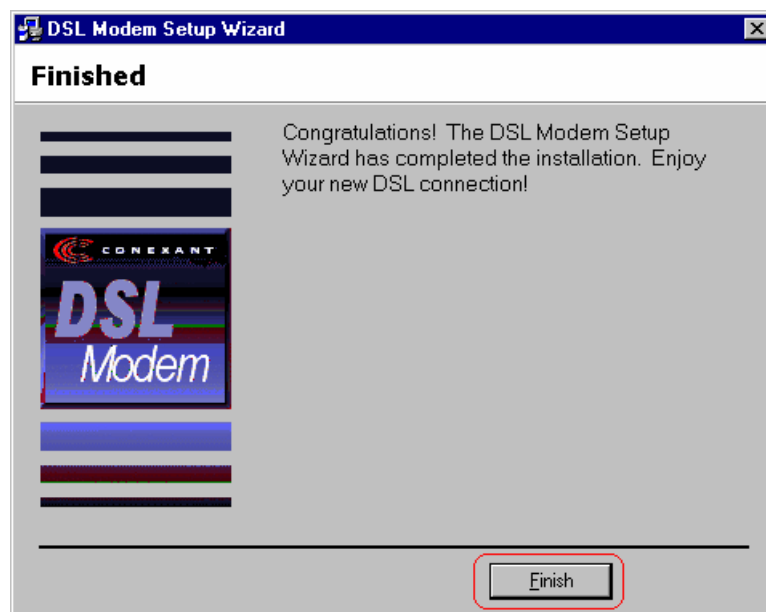
For **Windows 98SE**, during the installation process, the system will ask you to insert Windows 98SE installation CD, please insert the CD and click **“OK”**.

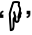


The **Reboot** window will appear. Remove all disks from their drives, select **“Yes, reboot the computer now”**, and click **“Close”** to reboot.



Once the PC has rebooted, the **Finished** window will be displayed indicating the installation has been completed. Click **“Finish”**.

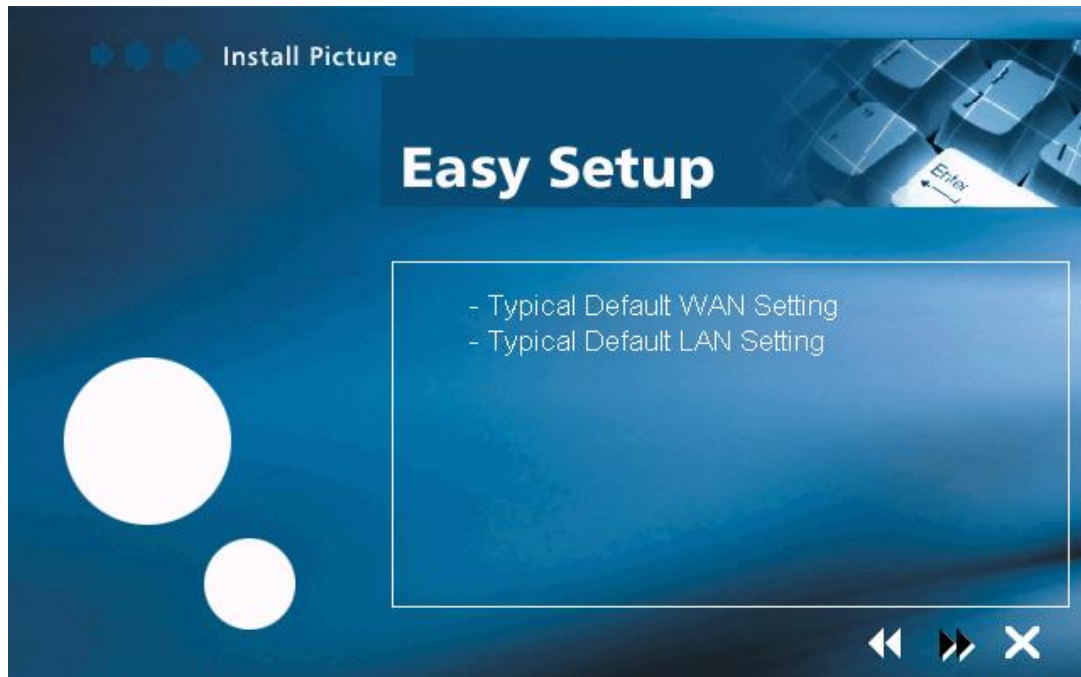


Step 10: If your country is not on the list, please click “” to next page and select “**Other**”,



a) After you select “**Other**”, the window below will appear, you must refer to the following table before you select the connection type,

Connection Type	Encapsulation and Multiplexing method	Network Information
WAN	PPP over ATM LLC (RFC 2364) PPP over ATM NULL (RFC 2364) PPP over Ethernet (RFC 2516)	Internet Account information: ● User name ● Password
LAN	Classical IP over ATM (RFC 1577) IP over ATM Bridged LLC (RFC 2684) IP over ATM Bridged VC (RFC 2684) IP over ATM Routed LLC (RFC 2684) IP over ATM Routed VC (RFC 2684)	TCP/IP information: ● IP address ● Subnet mask ● DNS ● Gateway



- b) After you select the connection type, the window below will appear, and then confirm modem settings. All settings here are default, it **might not** correct settings for your connection, double check your ISP for the settings and go to **“Accessing Communication Settings on Windows”** to modify the settings.

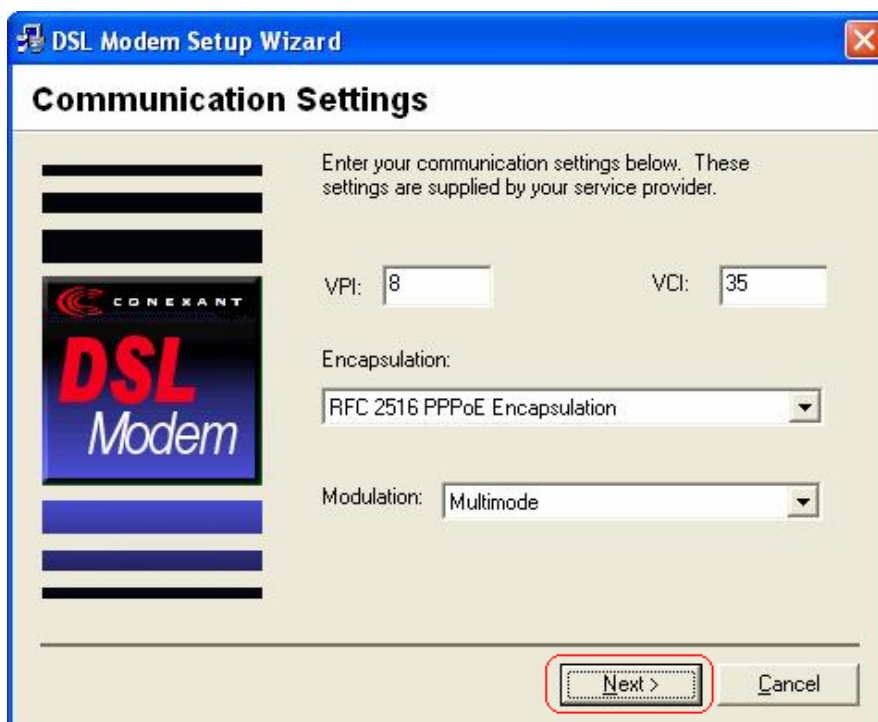


4.3 Accessing Communication Settings on Windows

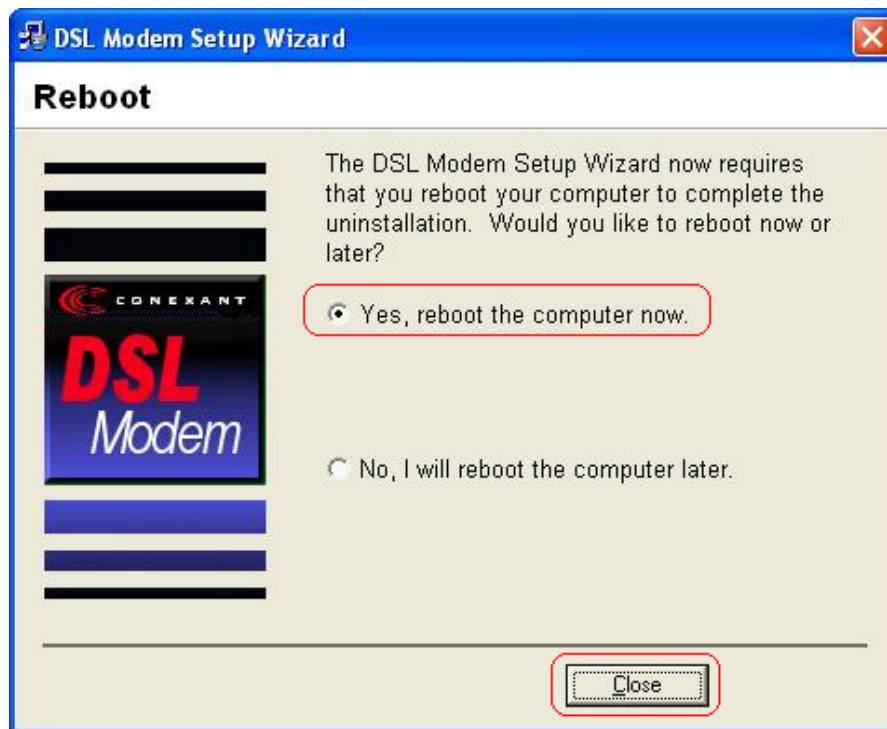
Step 1: From your PC desktop, click **Start**→**Program**→**Conexant DSL Modem**→ **Configure**.



Step 2: The “**Communication Settings**” Window will be displayed. Make the necessary changes to the VPI, VCI, Encapsulation type and/or Modulation type and click “**Next>**”.



Step 3: The system must be rebooted to have the new settings take effect, therefore the **Reboot** window will appear. Remove all disks from their drives, select “**Yes, reboot the computer now**”, and click **Close** to reboot.



PS. For the detail information, please refer to the manual in the provided CD.