

# **EDIMAX**

**NETWORKING PEOPLE TOGETHER**



## **Wireless Access Point**

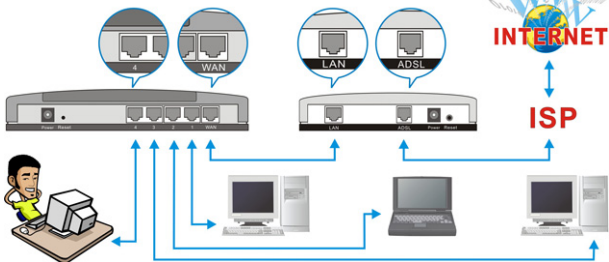
EW-7206APg / EW-7206PDg / EW-7209APg

# **Quick Installation Guide (Q.I.G.)**

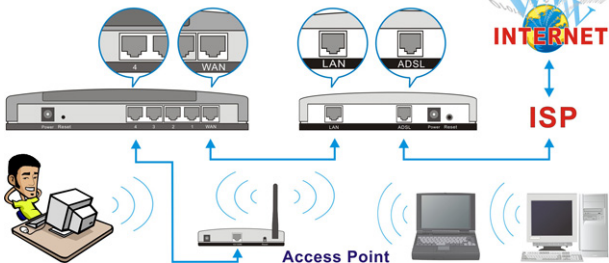
Version 2.0 / October 2006

## Getting Started

Before deploying the Access Point, please make sure all the PCs in your wired network are able to obtain an IP address automatically from the router like the figure below.

**Broadband Router****ADSL / Cable Modem**

After the Access Point is deployed, you can surf the Internet / Intranet wirelessly as show in the figure below.

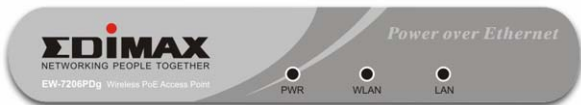
**Broadband Router****ADSL / Cable Modem**

## Physical Description

### Front Panel

The LED lights located on the Access Point's front panel provide information of the Access Point's current status.

EW-7206APg



EW-7206PDg



EW-7209APg

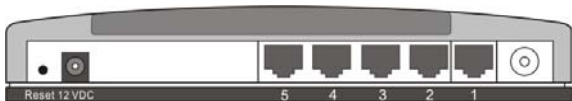


LED	Color	Status	Description
<b>PWR</b> (Power)	Green	Lit	Power is supplied.
		Off	No Power.
<b>WLAN</b> (Wireless LAN)	Green	Flash	Antenna is transmitting or receiving data.
	Orange (EW-7209APg)	Off	Antenna is not transmitting or receiving data.
<b>LAN</b> (Link / Act)	Green	On	A valid link is established.
		Flash	It is transmitting or receiving data.
		Off	No link is established.


## Back Panel



EW-7206APg / EW-7206PDg



EW-7209APg

- **Antenna Connector**   
This is where you connect the antenna. It is a round connector (standard Reverse SMA).
- **12 VDC**  
This is where you connect the power adapter.
- **Reset**  
The reset button has two functions.
  1. If you want to reboot the Access Point, use a pencil tip to press the reset button no more than 4 seconds.
  2. If you press and hold the reset button for more than 4 seconds, the Access Point will reset to the factory defaults (Warning: Your settings will be deleted and replaced with the factory default settings).
- **10/100M** (EW-7206APg / EW-7206PDg)  
This LAN port is where you connect the Access Point to your Ethernet devices (switch or router).
- **1. 2. 3. 4. 5.** (EW-7209APg)  
These LAN ports are where you connect the Access Point to your Ethernet devices (switches or routers) or to computers.

## Wireless LAN Access Point Configuration

To configure the other advanced settings of this Access Point with advanced setting such as data encryption, please follow the procedures to login the Access Point's setup page.

To configure the more advanced settings from this Access Point, such as data-encryption, please follow the procedure to login the Access Point's setup page.

The IP address of the Access Point is **192.168.2.1**

### First, assign an IP Address to the PC

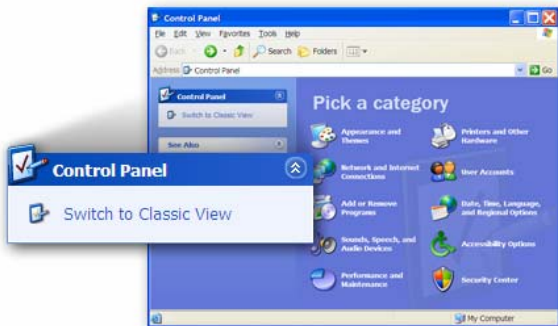
Before assigning an IP address to the PC, please connect a network cable from the LAN port of the PC to the LAN port of the Access Point as show below.



1. Click **“Start”** on the task bar then select the **“Control Panel”** to open it.



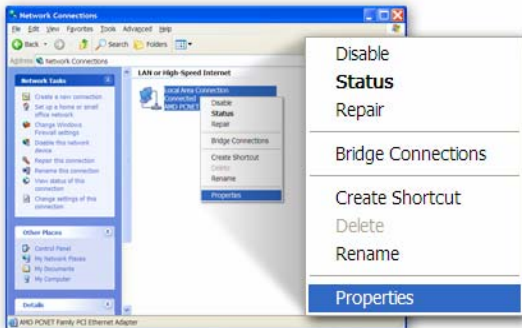
2. Click **“Switch to Classic View”** on the top left corner to see more setting icons...



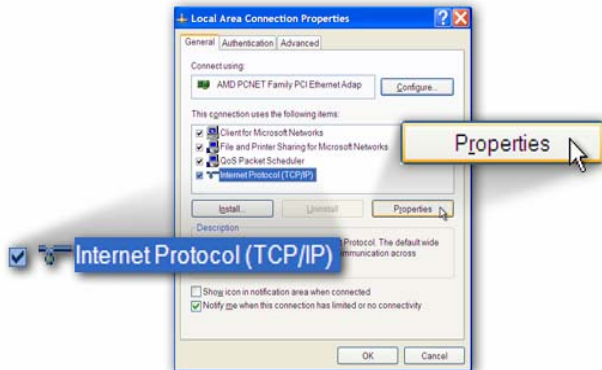
3. Find the **“Network Connection”** icon then Double-Click to open the network connection settings.



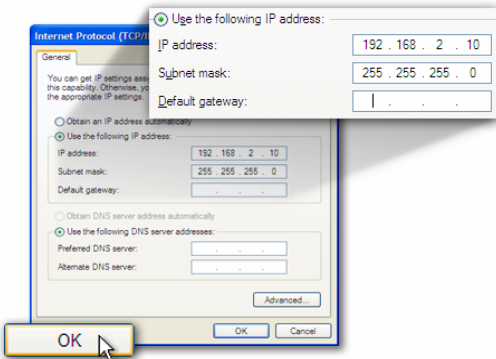
4. You will see the “**Local Area Connection**” icon, click the icon to highlight it, then Right-Click the mouse to open the sub-menu and select the “**Properties**” to setup the IP address.



- Click and highlight the “**Internet Protocol (TCP/IP)**”, then click the “**Properties**”

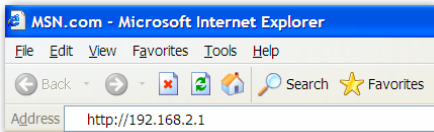


- Select **“Use the following IP address”**. Enter a fixed IP address, for example **“192.168.2.10”**, with a subnet mask of **“255.255.255.0”** and leave **“Default gateway”**, **“Preferred DNS server”** and **“Alternate DNS server”** blank then press **“OK”** to close.



## Second, login to the Access Point with a Web Browser

1. Open up web browser and type in **192.168.2.1** (Access Point default IP address) to access the Access Point's setup page.



2. A screen requesting user name and password, shown on next page, will appear. The default user name and password are:

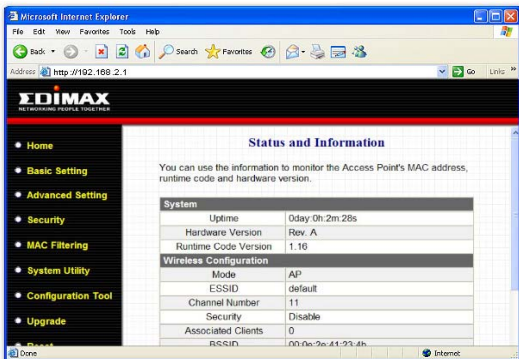
**User Name: admin / Password: 1234**

**Note:** It's highly recommended to change the login settings and keep it for future reference.



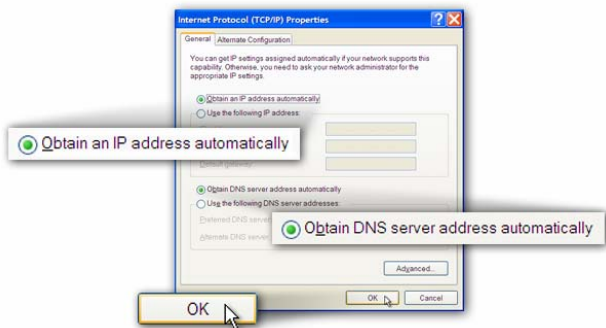


3. Enter the default user name and password, then press OK button. You can start configuring the Access Point now.



**Note:** If this Access Point will be connected to a router, please first find out the DHCP/IP address setting of the router and setup a suitable IP address to the Access Point. Check the manual on the CD for more setting details.

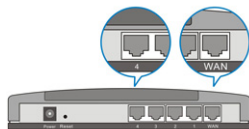
4. After the configuration is done, please change your PC's IP address back to original setting either **“Obtain an IP address automatically”** / **“Obtain DNS server address automatically”** or **“Using the following IP address”** / **“Use the following DNS server addresses”**. Press **“OK”** to close.



**Finally, connect the Access Point to your router or switch.**

Now you can use the wireless card in your PC to connect to the Internet / Intranet wirelessly as shown below:

**Broadband Router**



**ADSL / Cable Modem**

