



Wireless / Fast Ethernet Print Server Series

Quick Installation Guide

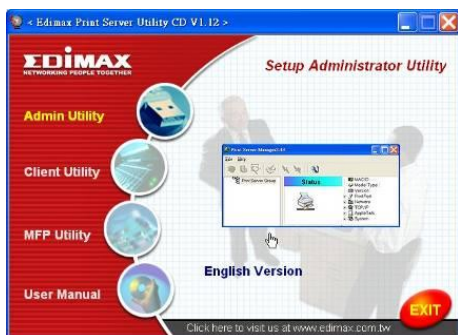
Version 1.1 January, 2006

Insert the CD shipped along with the print server into your CD-ROM drive. The Autorun.exe program should be executed automatically. If not, run Autorun.exe manually from CD-ROM drive's root directory.

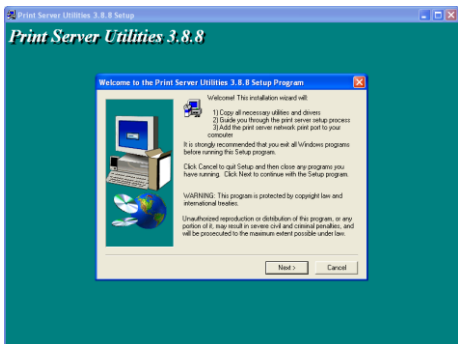
The “Installation Manager” will be displayed on the screen as following. Click “**Admin Utility**”.



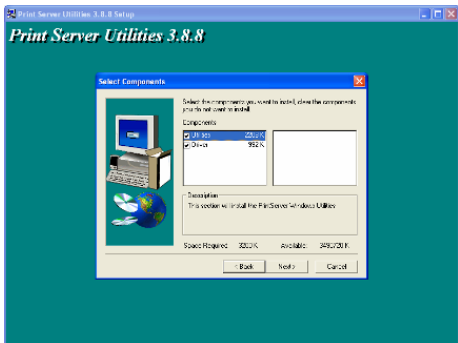
The “Admin Utility” window will be displayed. Click “**English Version**”.



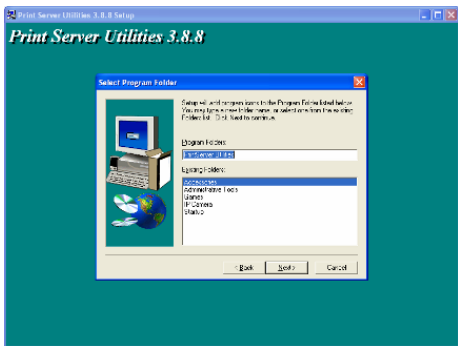
Click **“Next”** to install the utilities in the default folder or click **“Browse”** to specify the destination folder where you would like to install the utilities.



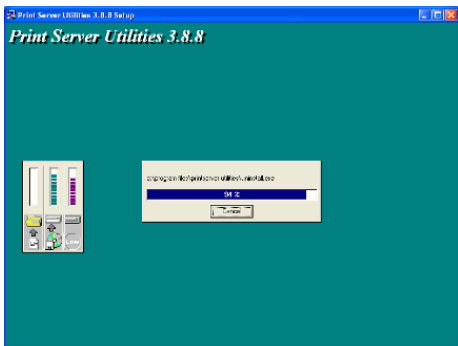
Select the components you want to install. It is highly recommended to install all provided components. Click **“Next”** to continue.



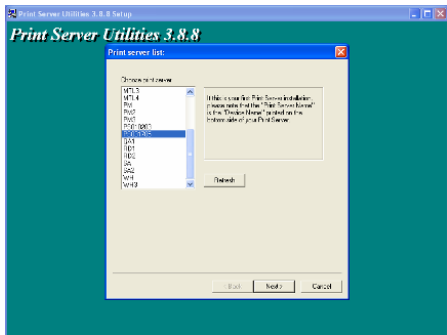
Specify the program folder where the program icons will be added to, click **“Next”**.



The system will start to install the utilities automatically.



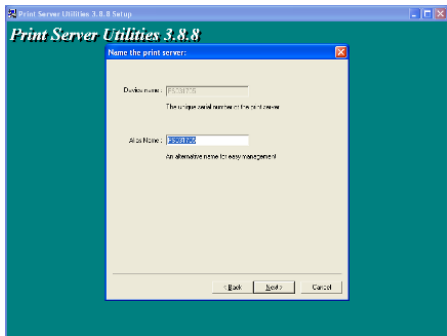
You have completed the installation phase and prepare to configure the Print Server. The **“Choose Print Server”** will list all Print Servers within the network. Select the Print Server you would like to configure and click **“Next”**.



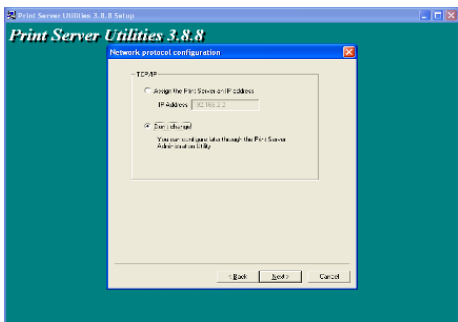
NOTE 1: If this is the first time you configure the Print Server, the “Print Server Name” is the same as the “Device Name” printed at the rear side of the print server.

NOTE 2: The list can only display the devices from the same manufacturer.

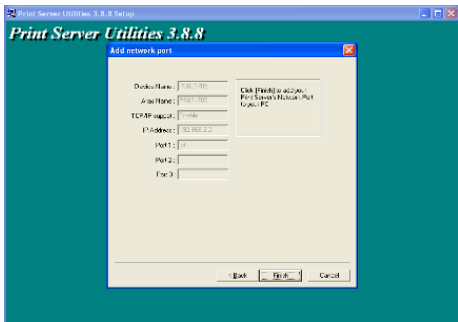
Specify a recognizable name for the Print Server and click “Next”.



The “Network Protocol Configuration” will display the network protocols the Print Server is currently enabled. By default, TCP/IP is enabled, while IPX and NetBEUI are disabled. Specify the IP Address for the Print Server manually or click “Next” to keep default IP Address, i.e. 192.168.2.1.



The configuration summary is displayed in the window. Now, you have completed the “Print Server Setup”. Click “Finish” and your system will add network port of the Print Server to your PC automatically. The Installation procedure is completed. Click “Finish”



1.5 Client Installation and Setup

The Client Installation Program is a wizard driven procedure which will perform the following tasks,

- Install client utilities and drivers into your PC.
- Automatically add all Network Ports to your PC.
- The network port driver supports network protocol auto-detection. It will automatically select an available network protocol (TCP/IP, IPX or NetBEUI) of the client computer to connect to the print server.

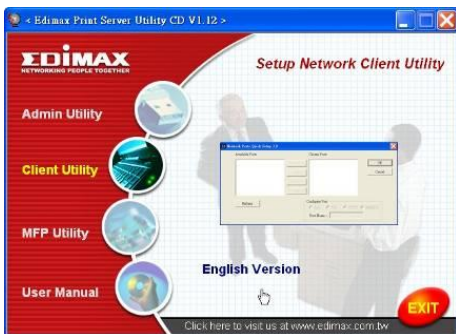
Since both the print server side and client side support multi-protocols, the configuration process of the client side is fully automatic.

After the installation, perform the standard “Add Printer” procedure and choose the print server’s “Network Port” in the “Available Ports” list. You can test printing from the PC to the print server as your local printer.

The Client Installation can be performed on Windows 95/98/Me/NT/2000/XP with the same user interface. Before installation, please confirm that your PC has already connected to the network and installed at least one network protocol. Please follow the steps below to start installation.

Insert the CD shipped along with the print server into your CD-ROM drive. The Autorun.exe program should be executed automatically. If not, run Autorun.exe manually from CD-ROM drive’s root directory.

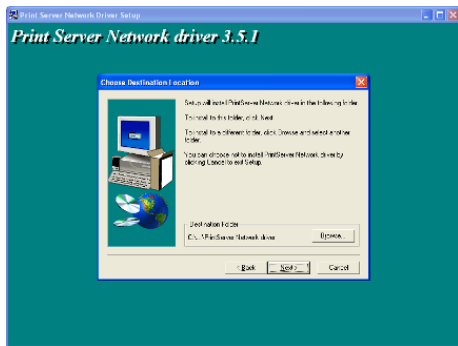
The "Installation Manager" will be displayed on the screen as follows. Click "**Client Utility**". The "Client Utilities" window will be displayed. Click "**English Version**".



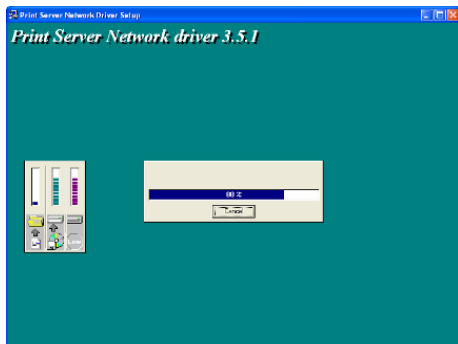
Click "**Next**" to install the utilities in the default folder or click "Browse" to specify the destination folder where you would like to install the utilities.



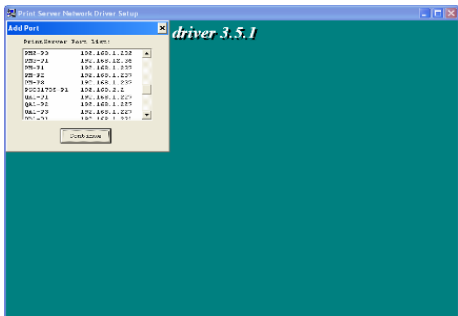
Specify the program folder where the program icons will be added to, click **“Next”**.



The system will start to install the utilities automatically.



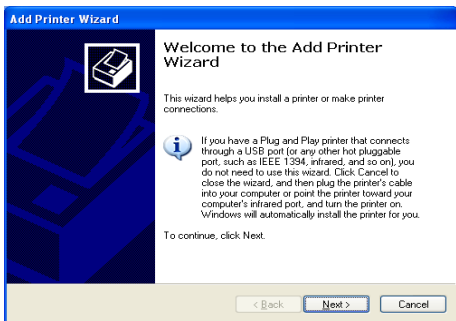
Now, the installation procedure is completed, you are ready to set up the client's computer. All network ports of the Print Servers detected on the network will be added to your PC automatically, click **“Continue”**. when the Installation procedure is completed. Click **“Finish”**



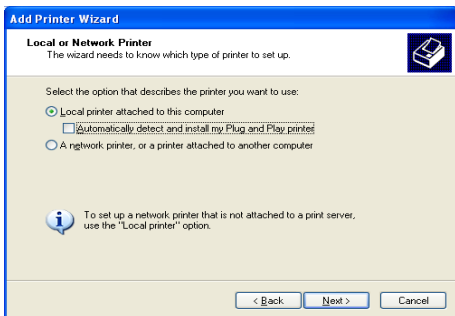
. After adding a “**Network Port**” of the print server to your PC by Administrator or Client Installation Program, you can follow the procedure described in next pages add printer to the Windows.

1.6 Windows Add Printer Procedure

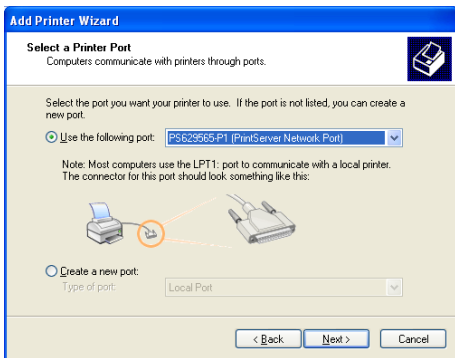
- Step1. Click “**Start**”, choose “**Settings**” and select “**Printers and Faxes**”.
- Step2. Click “**Add a Printer**”.
- Step3. The “Add Printer Wizard” is displayed. Click “**Next**”.



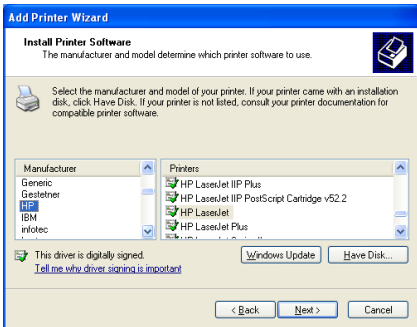
- Step4. Select **“Local printer attached to this computer”** and make sure that **“Automatically detect and install my Plug and Play printer”** is not selected. Click **“Next”**.



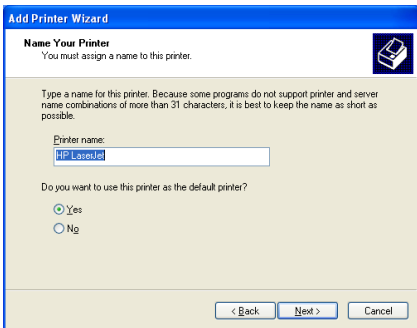
- Step5. Choose the suitable **“Print Server Network Port”** which was created by the Administrator Installation or Client Installation process and click **“Next”**.



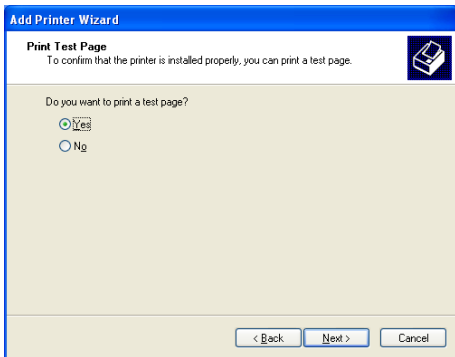
- Step6. Select a suitable printer manufacturer and the printer model and click “**Next**”. If your printer is not in the list, click “Have Disk...” to install the driver of the printer. After installation, the printer model will be added to the list.



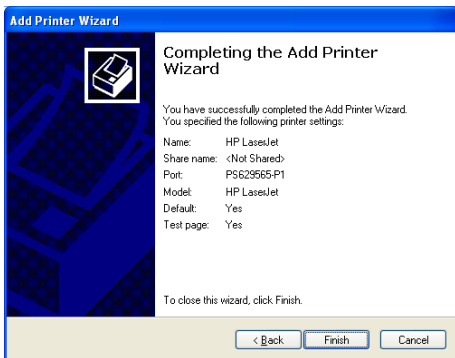
- Step7. Name your printer and setup the default printer, click “**Next**”.



- Step8. Choose to print the test page or not. It is recommended to print a test page. Click “**Next**”.



- Step9. You have added the printer to the PC successfully. The information of the printer is displayed in the windows. Click “**Finish**”.



Now you can start to print from your PC to the print server.

NOTE: The Above “Add Printer” steps are running under Windows XP, the steps in other Operating Systems are similar, please check user’s manual in CD for more info.